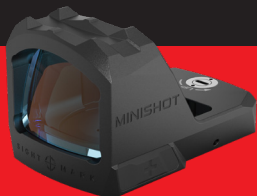


# SIGHT MARK<sup>®</sup>

## USER MANUAL



**Mini Shot M-Spec M1 V2  
REFLEX SIGHT**

**SM26062**

# ABOUT SIGHTMARK®

Founded to meet the changing needs of the outdoor industry and its customers, Sightmark® was introduced at SHOT Show 2007 in response to the growing popularity of the modern shooting market. The goal was to provide state-of-the-art optics and accessories to make the modern sporting rifle, shotgun and pistol as accurate as possible. In addition, each product is designed for the core market, enabling shooters to purchase more high quality items to accessorize their firearm for hunting, home defense and competition shooting.

In 2011, the new 33,000 square-foot (3066m<sup>2</sup>) headquarters was completed in Mansfield, Texas, combining the company's corporate offices and a large warehouse to handle the increase in sensitive material and technology being produced. The new facility provides more space for research and development, production, and distribution of defense-related products.

Best-selling products include red dot sights, riflescopes and chamber laser boresights. More than one million Sightmark® boresights are in use since first released to the market. Sightmark® has earned several patents and awards from industry associations and publications including Field & Stream, Optics Planet, Outdoor Life and Predator Xtreme. Numerous optics and accessories have been field tested and approved by prominent outdoor organizations such as the North American Hunting Club and the National Tactical Officers Association.

Currently, Sightmark® represents leading markets growing in more than 55 countries and many quality retailers in every state. Products are sold by top retailers and national specialty chains such as: Academy Sports & Outdoors, Bass Pro Shops, Cabela's, Frankonia and many more.



## MINI SHOT M-SPEC SERIES

Designed to be used on shotguns, pistols and AR's, the compact Mini Shot M-Spec Series is a rugged reflex sight with a 3 MOA red dot reticle. The sight includes both a low profile mount and a riser mount. Built from durable aluminum housing with a steel protective hood, the Mini M-Spec features an IP67 waterproof rating, making it ideal for law enforcement missions and hunting in the elements. The M-Spec also boasts extremely low power consumption technology, 1 MOA windage and elevation click adjustments, 11 brightness levels, an ambidextrous digital on switch and a 3 MOA reticle.

### FEATURES:

- 3 MOA Dot & 32 MOA Circle
- Shake Awake
- Docter / Venom Footprint
- IP67 Waterproof and Shockproof
- up to 50,000 Battery Life
- Top Mounted CR1632 Battery

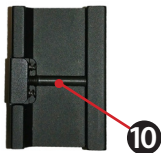
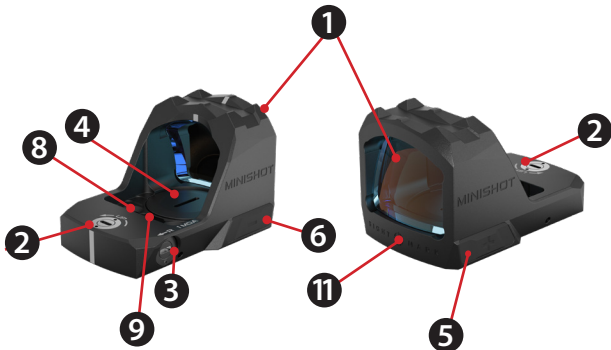
### INCLUDED:

- High Mount (1.5" mounting height)
- Low Mount (0.8" mounting height)
- Rubber Cover
- CR1632 Battery (in tamperproof packaging)
- Flat head Adjustment Tool
- T10 Torx Wrench
- M3 Screw 2 pieces
- #6-32 Screw 2 pieces
- Manual
- Lens Cloth

Technical Specifications:	SM26062
Reticle	3 MOA dot & 32 MOA circle
Magnification (x)	1
Objective lens size (mm)	24x19
Eye relief (in/mm)	Unlimited
Lens coatings	Multi Coated
IP Standard (water rating)	IP67
Adjustment (1 click)	1 MOA
Windage / Elevation adjustment range (MOA)	120 / 120
Parallax setting (yds / m)	50 / 45.7
Battery type	CR1632
Battery life (Circle Dot Constant On)	High: 60 hrs / Mid: 1,800 hrs / Low: 6,500 hrs
Battery life (Dot Only Constant On)	High: 400 hrs / Mid: 3,900 hrs / Low: 7,500 hrs
Battery life (Dot Only Including Shake Awake)	High: 800 hrs / Mid: 15,000 hrs / Low: 50,000 hrs
Reticle brightness settings	11 (9 day and 2 NV)
Maximum caliber	3000G
Body material	Aluminum 6061-T6
Mount type	Docter / Venom
Operating temperature (°F/ °C)	-20°F to 140°F / -30°C to 60°C
Dimensions (in/mm)	1.85 x 1.26 x 1.16 / 47 x 32 x 29.5
Weight of sight only (oz/g)	1.27 / 36

# DIAGRAM

1. Objective lens
2. Elevation adjustment
3. Windage adjustment
4. Battery cap
5. + Button
6. - Button
7. Mounting screws
8. Assembly screws
9. LED aperture
10. Recoil bolt
11. Photosensor
12. High picatinny mount
13. Low picatinny mount
14. Rubber Cover (not pictured)
15. Adjustment Tool (not pictured)



## INSTALLING THE BATTERY

The Sightmark Mini Shot M-Spec M1 V2 is powered by a single CR1632 battery. Should the reticle illumination grow dim or fail to illuminate, the battery needs to be replaced.

### To install a new battery:

1. Ensure your firearm is safe by following all manufacturer recommended procedures.
2. Locate the battery cap (4).
3. Using a large flathead or Cross-tool, loosen and remove the battery cap.
4. Remove any existing batteries inside the optic.
5. Place a new battery into the compartment + side up.
6. Replace the battery cap and tighten with a tool to at least **5 in-lbs / 1 N-m of torque.**



## ON/OFF ACTIVATION

### To turn the unit on:

1. Press and release +/- buttons (5/6).

### To turn the unit off:

2. Press and hold both the + and – buttons for three seconds.

## BRIGHTNESS CONTROLS

The Mini Shot M-Spec M1 V2 offers 11 brightness settings. Settings 1 through 2 are best for no to low light settings such as nighttime or early dawn/dusk and use with night vision equipment. Settings 3 through 6 are best for environments with low to mid-level brightness such as dark indoor lighting or cloudy outdoor environments. Settings 8 through 10 are best for bright, sunny outdoor environments, and setting 11 is best for the brightest conditions.

### To adjust the brightness:

1. Press the appropriate + or - button to adjust the brightness of the dot.
2. To increase brightness press the + button (5).
3. To decrease brightness press the - button (6).

**Note:** The last brightness setting used prior to deactivation will be the same setting next time the unit is activated.



## AUTOMATIC BRIGHTNESS CONTROL

The illumination of the Mini Shot M-Spec M1 V2 can also be controlled automatically by the photosensor (11) equipped on the optic. The photosensor takes readings of current light levels to automatically determine the correct brightness level. Since the sensor is placed near the emitter, it reads the light level both from where the optic is pointed, and above to determine the appropriate brightness level.

### To use automatic brightness control:

1. Hold the + button for three seconds until the reticle flashes 2 times. (5)
2. When moving the optic, the reticle should now automatically adjust brightness levels depending on the conditions\*.
3. To exit automatic brightness control, press and release either the + or – button. This will override the automatic brightness control and revert back to manual adjustment. (5/6)
4. The reticle will flash 1 time when entering manual adjustment mode.

**\*Note:** Night Vision settings are not supported in automatic brightness control.





## LOCK MODE

The Mini Shot M-Spec M1 V2 is equipped with a Lock Mode that will lock the optic to the current brightness and reticle settings.

### **To engage Lock Mode:**

1. Press and hold the – button for 3 seconds. The reticle will flash 3 times. (6)
2. Any button presses will not effect the reticle. The brightness and reticle style are locked until the mode is disengaged.

### **To disengage Lock Mode:**

3. Press and hold the – button for 3 seconds. The reticle will flash 4 times. (6)

## SHAKE AWAKE

The Mini Shot M-Spec M1 V2 comes installed with technology for Shake Awake. This will automatically turn the illumination off into a “sleep” mode after 5 minutes of no movement. When the optic detects any movement, it will automatically turn back on to the last used brightness setting and mode.

### **To use Shake Awake:**

1. The optic comes from the manufacturer with this feature turned on. No steps are required to use it.

### **To disable Shake Awake:**

2. Enter Lock Mode by pressing and holding the - button for 3 seconds. (6)
3. Press and hold the + and - buttons for 15 seconds. The reticle will flash 6 times. This will disable Shake Awake. (5) (6)

### **To enable Shake Awake:**

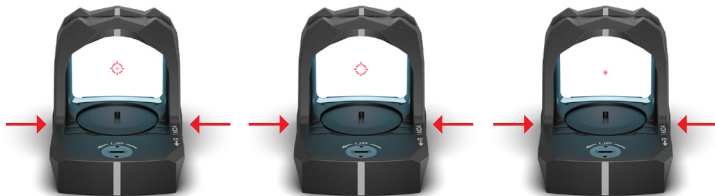
4. Enter Lock Mode by pressing and holding the – button for 3 seconds. (6)
5. Press and hold the + and – buttons for 15 seconds. The reticle will flash 5 times. This will enable Shake Awake. (5) (6)

## CHANGE RETICLE SIZE

The Mini Shot M-Spec M1 V2 can change the reticle style between a dot, a circle and a circle-dot.

**To change reticle styles:**

1. Press and release both the + and - buttons at the same time.



## MOUNT TYPE

The Sightmark Mini Shot M-Spec M1 V2 includes a low picatinny mount (13) and a high picatinny mount (12). If mounting on a bolt action hunting rifle, lever action, or shotgun, the low picatinny mount (13) is recommended. If mounting on a flat top AR style rifle, it is recommended the high picatinny mount (12) be installed to place the optic centerline at ~1.54".

**To remove the base:**

1. Use the included Torx key to loosen and unscrew the two mounting screws (7) attaching the sight to the mount.

2. Separate the sight from the mount.
  3. Select the desired mount to attach the sight to and align the recoil lugs on the mount with the optic's base.
  4. \*Tighten and secure the two screws by applying 17-inch pounds (1.9 N-m) of torque. Do not overtighten.
- \*Note:** For a semi-permanent fixture, a small amount of blue Loctite® may be applied to the threading of the two mounting screws.

## MOUNTING

The Mini Shot M-Spec M1 V2 mounts are designed to mount to both weaver and picatinny rails. For safety, it is best to have at least three to four inches of eye relief. The ideal location for mounting a red dot on picatinny rails is as far forward (toward the muzzle) as possible without having the mount overlap onto the handguard from the receiver. However, you can also mount where it is most comfortable for you.

### To mount on a picatinny rail:

1. Loosen the mount screw (8) on the mount. Attach the Mini Shot M-Spec M1 V2 to the firearm's rail with the objective lens (1) facing toward the muzzle.
2. Make sure the recoil bolt (10) is positioned in the groove of the rail and the unit is fully seated on the rail.
3. Tighten the bolt to 30-inch pounds (3.39 N-m) of torque. Do not overtighten.

The Mini Shot M-Spec M1 V2 also is compatible with many optic ready pistols that utilize the Docter/Noblex mounting standard. It can be mounted directly to these pistols without the use of adapter plates. The picatinny mount will have to be removed prior to installation on an optic ready pistol.

To mount on pistols with different optic footprints, adapter plates and screws will be required.

**To install the Mini Shot M-Spec M1 V2 on an optic ready pistol:**

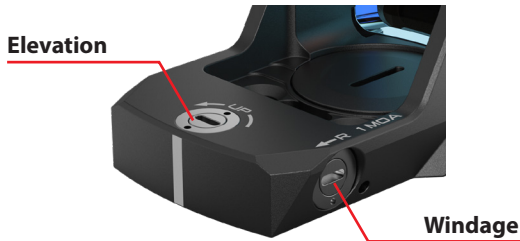
1. Follow the firearm manufacturer's mounting instructions. The pistol manufacturer's mounting hardware and screws should be used to mount the Mini Shot M-Spec M1 V2.
2. Align the recoil lugs on the mount with the optic's base, ensuring that the objective is facing the muzzle of the firearm.
3. \*Tighten and secure the appropriate mounting screws (7) by applying 17-inch pounds (1.9 N-m) of torque. Do not overtighten.
4. If you encounter resistance while attempting to start threading the screws, back out and confirm that you are using the correct thread pattern before tightening.

**\*Note:** For a semi-permanent fixture, a small amount of blue Loctite® may be applied to the threading of the two mounting screws.

## OPERATING THE WINDAGE AND ELEVATION ADJUSTMENTS

The Sightmark Mini Shot M-Spec M1 V2 has built-in windage and elevation adjustments (2/3) with clicks. The Mini Shot has 1 MOA clicks so each click moves the point of impact  $\sim 1"$  at 100 yards (2,91cm at 100m),  $\sim \frac{1}{2}"$  at 50 yards (1,45cm at 50m), and  $\sim \frac{1}{4}"$  at 25 yards (0,73cm at 25m). In order to make windage and elevation adjustments:

1. Use a flathead tool to make adjustments or "clicks".
2. Turn the adjustments in the appropriate direction needed to change the point-of-impact as indicated by the "UP" and "R" (left) arrows marked on the adjustments.



## BORESIGHTING AND SIGHTING IN

Boresighting and test firing should be performed safely on a firing range. Laser boresights are a quick and accurate method for sighting in. Below is listed the traditional method of boresighting and works best when the unit is mounted on a rest.

1. When mounting the sight on a bolt action rifle, remove the bolt; or when mounting to a semi-automatic rifle, disassemble the rifle until there is a straight line of sight through the bore.
2. Use a target at least twenty yards (meters) to fifty yards (meters) away when sighting in the sight. Look through the bore of the weapon and locate the bull's-eye of the target.
3. Sight in the target through the bore and then make windage and elevation adjustments (see "Operating Windage and Elevation Adjustments" for instructions) to the red dot until the reticle is centered on the bull's-eye.

To verify the reflex sight is accurately sighted in, always fire a three-shot test group at 50 or 100 yards (50 or 100m) preferably using the same ammo manufacturer, grain, and lot number.

4. After firing a group use the center of this grouping and make the necessary amount of adjustments to the elevation and windage adjustments to move your firearm's grouping to the center of the target.
5. Again, fire a three-shot test group to confirm the adjustments. Use the center of the new group to determine final adjustments.

When mounting on pistols, the reticle can also be aligned with the iron sights (if visible) to zero the optic.

## MAINTENANCE

Proper maintenance of the Mini Shot M-Spec M1 V2 is recommended to ensure longevity. It is recommended that when the sight becomes dirty that it is wiped down with a dry or slightly damp cloth. Blow dirt and debris off all optics and then clean lenses with a lens cleaning cloth. To remove oils or dried water spots, apply a small amount of denatured alcohol to a lens cloth or cotton swab. Clean the surface of the lens and let dry. Finally use your breath to clean the lens once more. No further maintenance is required. Do not attempt to disassemble any components of the sight.

## STORAGE

Make sure that your Sightmark Mini Shot M-Spec M1 V2 is securely attached to your rifle before storing, and be sure that the reticle illumination is turned off. Cover with the included rubber cover. Remove the battery if the unit will be stored for an extended period of time.

## WARNING

Before handling the Sightmark Mini Shot M-Spec M1 V2 sight read and understand the contents of your firearm's manual, and the Sightmark manual. Follow all standard safety precautions and procedures during firearm operation, even when the reflex sight is not in use.

- Avoid hitting or dropping the unit
- ALWAYS check that the chamber of your weapon is clear before mounting or dismounting the reflex sight.
- The reticle illumination should be tested during periods of non-use to make sure it is still operating properly. Failure to follow standard firearm safety precautions and procedures, as well as the above warnings, is dangerous and may result in serious injury, damage to property, or death.

## TROUBLESHOOTING

Proper authorization is required before shipping any product back to Sightmark. Failure to obtain authorization could result in your product being returned to the wrong address, lost, or damaged. Sightmark is not liable for products returned without authorization.

### **If the optic does not hold zero:**

1. Verify the sight is mounted securely to the firearm. If the sight can be shifted in any direction, re-tighten the mount according to the mounting instructions but do not overtighten. The sight will need to be re-zeroed afterwards.
2. Be sure to use factory-loaded ammunition of the same bullet type, weight, and, preferably lot number when sighting in. Using different types of ammunition can cause significant zero shift.

### **The reticle does not illuminate:**

1. Check that the battery is in working order and that the polarity of the battery is correct.
2. Check that there is no residue, film, or corrosion on the battery contacts that may be preventing the reticle from illuminating.
3. Check to make sure there are no obstructions between the emitter and the objective lens.
4. Press the + button repeatedly to ensure the reticle illumination was not set to Night Vision settings.

### **The reticle is blurry, there is glare, reflections and/or not in focus:**

1. Decrease the brightness level of the reticle. The glare, halo or fuzzy appearance is caused by excess illumination than is required for the current environment the sight is being used in. Highest brightness settings are only intended for bright, sunny conditions not low light indoor conditions.
2. Make sure the objective and emitter lenses are clean and do not have any film, fingerprints, or debris covering the surface. Blow off any debris or dirt covering the lenses. Use a lens cloth or q-tip dipped in alcohol to remove any film or fingerprints.
3. If you are testing the product at a close range, 5 yards (meters) or less, to verify its on/off operation the eye will accommodate and focus either on the sight's reticle or the target you are observing not both. Test the product beyond 5 yards (meters) and focus your eye on the target, then the reticle and target should be in focus.



**The reticle illumination turns off while firing:**

1. Tighten the battery cap with a coin or flathead screw driver so the cap is fully seated.
2. Replace the battery with a new battery.
3. Verify the sight is mounted securely to the firearm. If the sight can be shifted in any direction, re-tighten the mount according to the mounting instructions but do not overtighten.

**The buttons make no changes to the reticle brightness or style:**

1. Ensure the optic is not in Lock Mode. Hold the – button for 3 seconds until the reticle flashes. 1 flash means you have disabled Lock Mode and can now adjust the brightness/style. 2 flashes means you just enabled Lock Mode. Button inputs will not be recognized. Hold the – button again until the reticle flashes 1 time.

## SIGHTMARK WARRANTY

Please visit [www.sightmark.com](http://www.sightmark.com) for warranty details and information.

## WARNING AND SAFETY INSTRUCTIONS:

- Even used batteries may cause severe injury or death.
- Call a local poison control center for treatment information.
- Battery Type: CR1632
- Nominal Voltage: 3.0 Volt
- Non-rechargeable batteries are not to be recharged.
- Do not force discharge, recharge, disassemble, heat above 140°F / 60°C or incinerate. Doing so may result in injury due to venting, leakage or explosion resulting in chemical burns.
- Ensure the batteries are installed correctly according to polarity (+ and -).
- Do not mix old and new batteries, different brands or types of batteries, such as alkaline, carbon-zinc, or rechargeable batteries.
- Remove and immediately recycle or dispose of batteries from equipment not used for an extended period of time according to local regulations.

- Always completely secure the battery compartment. If the battery compartment does not close securely, stop using the product, remove the batteries, and keep them away from children.

## **WARNING**

- **INGESTION HAZARD:** This product contains a button cell or coin battery.
- **DEATH** or serious injury can occur if ingested.
- A swallowed button cell or coin battery can cause **Internal Chemical Burns** in as little as **2 hours**.
- **KEEP** new and used batteries **OUT OF REACH of CHILDREN**.
- **Seek immediate medical attention** if a battery is suspected to be swallowed or inserted inside any part of the body.



Battery type: **CR1632**      Battery voltage: **3V**



[www.sightmark.com](http://www.sightmark.com)

